

**Head Teacher Message:**

This has been a very busy term and very soon we would have completed our final year in our temporary accommodation at the Primary School. I am pleased to report that Morgan Sindall remain on track for us to move into our new building in September 2018. The car park works will still be completed at the start of the autumn term but we are all very excited to be moving into the main building. I have visited the site several times and I have been very impressed with the construction so far. The internal designs have all been set and finalised and we hope to see further progress over the next couple of months.

This month has been a very successful month with the children in Reception and Year 1 all making great progress with their work. Their work has genuinely been amazing in all areas of the curriculum and we will be proud to share this with you in our Summer Open Evening again. We have appointed new teachers for September 2018 and we will be interviewing in June for our new HLTAs, TA, Lunch staff and for an additional cleaner.

I would also like to commend everyone for supporting our drive for outstanding school attendance. I have been very impressed with our recent attendance which has seen some of our classes achieve 100% attendance this month!

**Walking to School**

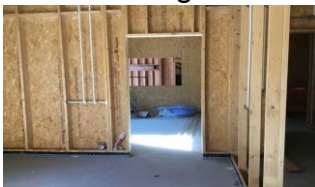
Well done to all our pupils for making a fantastic effort to walk, scooter or cycle to school. For every child that manages to do this at least once a week we give out a special Wow Badge if they have done this consistently for a whole month. Everyone is making a real effort and please do not forget that this also counts if you park and stride away from the school entrance. The more pupils that can do this the better for the environment and also the less congestion and traffic around our school gates. We are also giving out special 'Strider' Badges for children that make the huge effort of always walking, scooting or cycling to school!

Important – Please, on a serious note always be aware of our pupils and parents near the school gates. Nobody should ever park or stop where we have marked cones near the school gates and we all need to be aware of the dangers and risk of parking on the pavement near the school when opening car doors and moving away. This is why we always encourage walking to school or parking further away from the school entrance. Thank you as always for your co-operation and understanding.

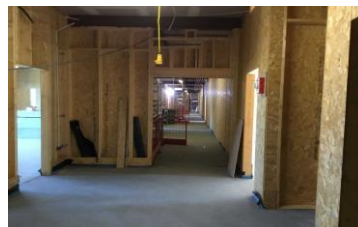


### **Buildings Update**

The regular meetings continue to progress very well and the building is on schedule. The car park will be further developed in the autumn term but the main pedestrian entrance will be ready for the start of the new term. The windows for the school are now all in. The next stage is to prepare the building for the external finish. Some of the rooms inside have been plastered and even painted. The Hall is actually looking very spacious indeed and the corridors look very wide. All the colour schemes have been finalised as have the interior finish choices. Overall, I am very pleased with the development and as always we just cannot wait to finally move in for September 2018! Earlier this week the staff were able to walk around the building and take some pictures! We are all very excited to move in.



This shot was taken from the Head Teacher's office looking into the main school office



Ground Floor corridor.

### **Vacancy at Ashmole Academy**

**Part time Art Technician point  
17 term time - 20 hours per  
week (8:30am - 12:30pm - Monday-  
Friday) 9,059pa**

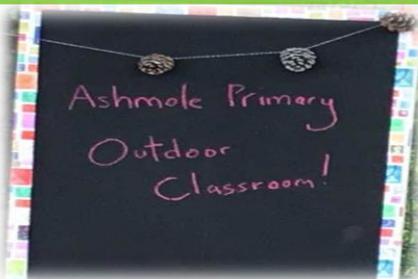
If you are interested in this post or know of anyone who may be interested, please refer to our website where you will be able to view a job description and download an application form.

**Closing date : Friday 1st June 2018**

### **Friday 18<sup>th</sup> May 2018- Royal Wedding Dressing Up Day**

This was a lovely day for the children who all came into school wearing smart clothes dressed for a wedding or red, white and blue! The children also enjoyed having their own mini party and picnic in the afternoon. Everybody had a great time in the sunshine.





### **PTA Wildlife Garden**

A huge thank you to our parents for their fantastic work on decorating our playground and for creating our own Wildlife Garden. Thank you to everyone that has given up their time to help paint tables, benches, decorate the play shed, the reading shed, plant seeds in the flower pots, wellies and the wheelbarrow! Your support is greatly appreciated by all the staff and the children.

The children in Reception and Year 1 will have supervised access to this outdoor area over the summer term on a regular basis to further enhance their learning with the local habitat.



### **Computing – Purple Mash**

All our children have access to a very useful IT resource called Purple Mash. Purple Mash is a creative educational website for children. Purple Mash is a cross-curricular resource covering art to science and all subjects in between. Your child can access Purple Mash from home on a laptop, desktop or a tablet. It is a safe environment that does not require any downloading or allow interaction with people online and children cannot make any financial transactions.

We will be encouraging the children to continue their learning at home and Purple Mash is a great resource for this. Your child is taught how to use Purple Mash in school and will be able to use it without supervision, but you may want to take a few minutes to explore it yourself so that you can help them with their work.

Reception pupils now have a new log in that has been sent separately. Any questions please speak to the class teachers.





# Class News

## Reception

Our main topic for the first half of the Summer Term was Animal Stories. We looked at different species and their habitats, learning about life cycles and looking closely at similarities and differences. The highlight for the children was definitely watching our very own class caterpillars turn into beautiful butterflies! We had a lovely time celebrating the Royal Wedding too!



## Year 1

In Science, we have been focusing on functions of different parts of a plant as well as identifying and naming plants in our school environment. Year One have been given the opportunity to plant their own beans and create a non-fiction book about growing and looking after plants. In addition to studying different toy artefacts, they have also experienced playing a variety of playground games from the past such as: Queenie, Rolling Hoops, and Oranges and Lemons. We also celebrated the Royal Wedding and enjoyed a lovely tea party!



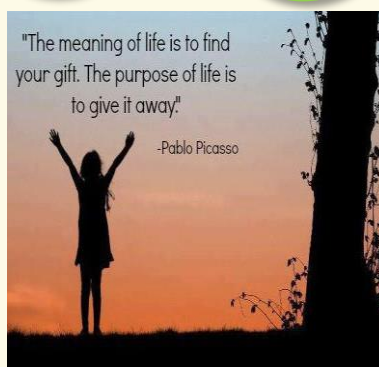


Value:  
Excellence

May  
2018

### Value of the Month

Our Value for  
June  
is  
**Generosity**  
'The quality of being  
kind and generous.'



### Attendance

Calypso Class 98.04 %

Nova Class 98.48%

Orion Class 98.24%

Luna Class 98.99%



## Celebrating Achievement

### Year 1

#### Luna Class

#### Merit Awards

Musa  
Evie  
Ted  
Florrie  
Amaya  
Zahir  
Elizabeth  
Jake

#### Value Award

Gabriella  
Ediz  
Sia  
Olivia

#### Nova Class

#### Merit Awards

Alexandra  
Nikolaos  
Tilly  
Joshua  
Kiki  
Seb  
Serena  
Dante

#### Value Award

Eren  
Nikolaos  
Joe  
Arden  
Eren

#### Orion Class

#### Merit Awards

James  
Ella  
Kaan  
Mara  
Leyla  
Rocco  
Della  
Roan

#### Value Award

Arlina  
Anyia  
Aleana  
Nathaniel

#### Calypso Class

#### Merit Awards

Sofia  
Jude  
Isla  
Rory  
Ariyan  
Sara  
Elexa  
Dimitar

#### Value Award

Ben  
Alyssa  
Timofei  
Marina

### Year 1 Handwriting Awards

Elodie, Lily, Henry, Musa, Lewis and Keana

### Reception Handwriting Awards

Freya, Niyan, Arlina, Alyssa, Isla and Timofei



# APPTA News

## Ashmole Primary PTA

by supporting APPTA, you are supporting Ashmole Primary

### **DATES FOR YOUR DIARIES:**

**Summer Fair: Saturday 23rd June**

**12.30pm - 3.30pm**

**BEACH THEMED!**

We need everyone to volunteer, either in helping with preparations in advance, or on the day.

**Father's Day Pop Up Shop: Thurs 14th June**

**8am - 8.50am & 3.15pm - 5pm**

Gifts will be sold, £2 each in the playground at 0800, and after school until 1700.

**Happy Bag Recycling collection: Thurs 7th June, 10am - 11am**

Bring bags of clothes and shoes to the school that morning or the day before. No later.

**Own Clothes Day: Friday 8th June**

Each child to bring in a jar filled with sweets (and tiny toys), or a soft toy, in exchange for wearing own clothes.

**Ashmole Primary School Parents Group**

**THANK YOU:**

- To all the parents who took part in Project Playground and created a wonderful outdoor space for our children.

- To our wonderful Class Reps for their continued commitment

**Congratulations to the winner of our logo competition: Arlina from Orion.**

**HOW YOU CAN HELP WITH THE SUMMER FAIR?**

- Volunteer with your class rep
- Save soft toys or teddies for the 'Teddy Shy'
- Save used school uniform for a stall
- Start filling jars with sweets and tiny toys
- Loan a gazebo, or garden umbrella, or fun inflatables







Value:  
Excellence

May  
2018

## Diary Dates

June	4 <sup>th</sup>	8.50am	First day of half term
	5 <sup>th</sup>	7pm	APPTA meeting
	7 <sup>th</sup>	AM	APPTA Happy Bag Clothes Collection
	8 <sup>th</sup>	All Day	Non uniform for Summer Fair
	w/c 11 <sup>th</sup>	All Week	Phonics Screening Check – Year 1
	15 <sup>th</sup>	All Day	Paradise Wildlife Park (Reception only)
	23 <sup>rd</sup>	12pm-3pm	APPTA Summer Fair
July	4 <sup>th</sup>	1.15pm-3.15pm	Sports Day for Reception and Year 1
	6 <sup>th</sup>	All Day	Inset Day – School Closed to pupils
	9 <sup>th</sup>	4pm - 6pm	Open Day for Reception and Y1 REPORTS OUT TO PARENTS
	12 <sup>th</sup>	9.00am – 10.00am	End of Year Show to be held at the Academy Hall
	17 <sup>th</sup>	12.45pm	End of Term – School closes at 12.45pm
	18 <sup>th</sup> -19 <sup>th</sup>	-	INSET DAYS
		AUGUST	SUMMER HOLIDAYS



[www.ashmoleprimary.org](http://www.ashmoleprimary.org)

[www.easyfundraising.org.uk/ashmoleprimary.org](http://www.easyfundraising.org.uk/ashmoleprimary.org)

Tennis

Chinese School

Drama Club

Football Club

Yoga

[www.tennisrocksltd@gmail.com](mailto:www.tennisrocksltd@gmail.com)

[www.huahsia-chinese.org.uk](http://www.huahsia-chinese.org.uk)

[www.stagecoach.co.uk/southgate](http://www.stagecoach.co.uk/southgate)

[www.soccerrevolution.co.uk](http://www.soccerrevolution.co.uk)

[www.tattybumpkin.com/winchmorehill](http://www.tattybumpkin.com/winchmorehill)

# Useful websites!