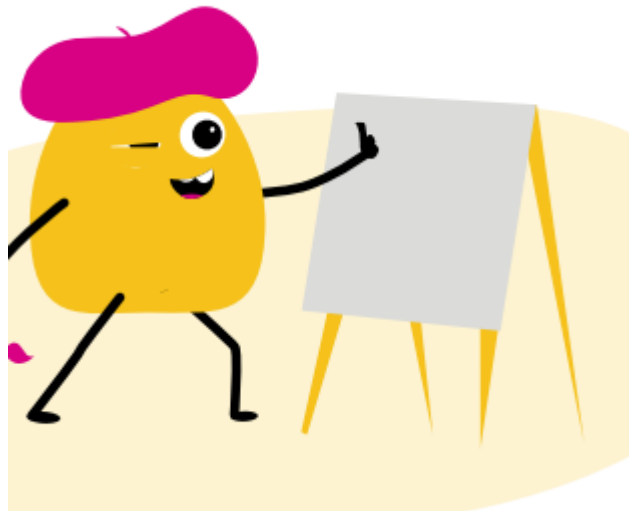


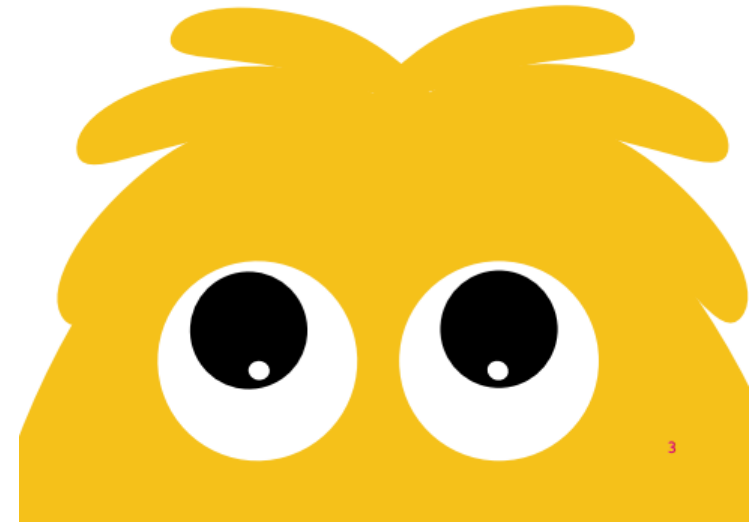
Science Week 2024

British
Science
Week
2024



"TIME"
POSTER COMPETITION

- The theme for British Science Week 2024 poster competition is 'TIME'.
- The deadline for entering the competition is Wednesday 13th March 2024.
- Posters need to be A4 or A3 in size.





Don't know where to start?

Encourage children to think about time – what it means to them and how it relates to science they've learnt about – to come up with ideas to include in their poster. Here are some points and questions to get you going:

- Get children to think about their own time – how do they spend it? At home, out playing in the park, arts and crafts, learning at school?
- What about time in the world, and beyond? How do we measure time – seconds, days, seasons, centuries? What about time in space?
- Are there any scientists they know of whose work relates to time? What about time travel in films, TV and music?

How will the posters be judged?

- **Creativity in approach** - Innovative angle on the content or creative interpretation of the theme
- **Content** - Clear, accurate and informative about a STEM topic
- **Effective communication** - presented and communicated in an engaging way

2023 winners / examples -



Connections

In a forest, or anywhere, everything and everyone is interlinked. We all rely on each other for food, shelter, and a helping hand. Trees do too, and this is the amazing way in which they communicate...

HUB TREES

also known as mother trees, are the oldest, biggest, trees in the forest. Hub trees have greater access to sunlight, resulting in a higher rate of photosynthesis. Therefore, they produce more sugar than they actually need...

In return, the mycelium provides the tree with the nutrients it needs from the soil.

FUNGI need the glucose the trees make. Their mycelium grows within the root system of trees, so they can absorb the excess sugar.

GLUCOSE

NUTRIENTS FROM SOIL

SYMBIOTIC RELATIONSHIP

Known as MYCORRHIZA

Seems from the Greek words meaning FUNGUS and

ROOT (RHIZA)

NURTURE SHADED SEEDLINGS WHO DON'T PRODUCE ENOUGH GLUCOSE

Share nutrients and water to support each other

MYCORRHIZAL NETWORKS

are an underground network of mycelium filaments enabling trees to...

SEND CHEMICAL SIGNALS TO NEARBY PLANTS WHEN UNDER THREAT.

MYCORRHIZAL NETWORKS

(ISN'T IT COOL!)

HACKING THE WEB



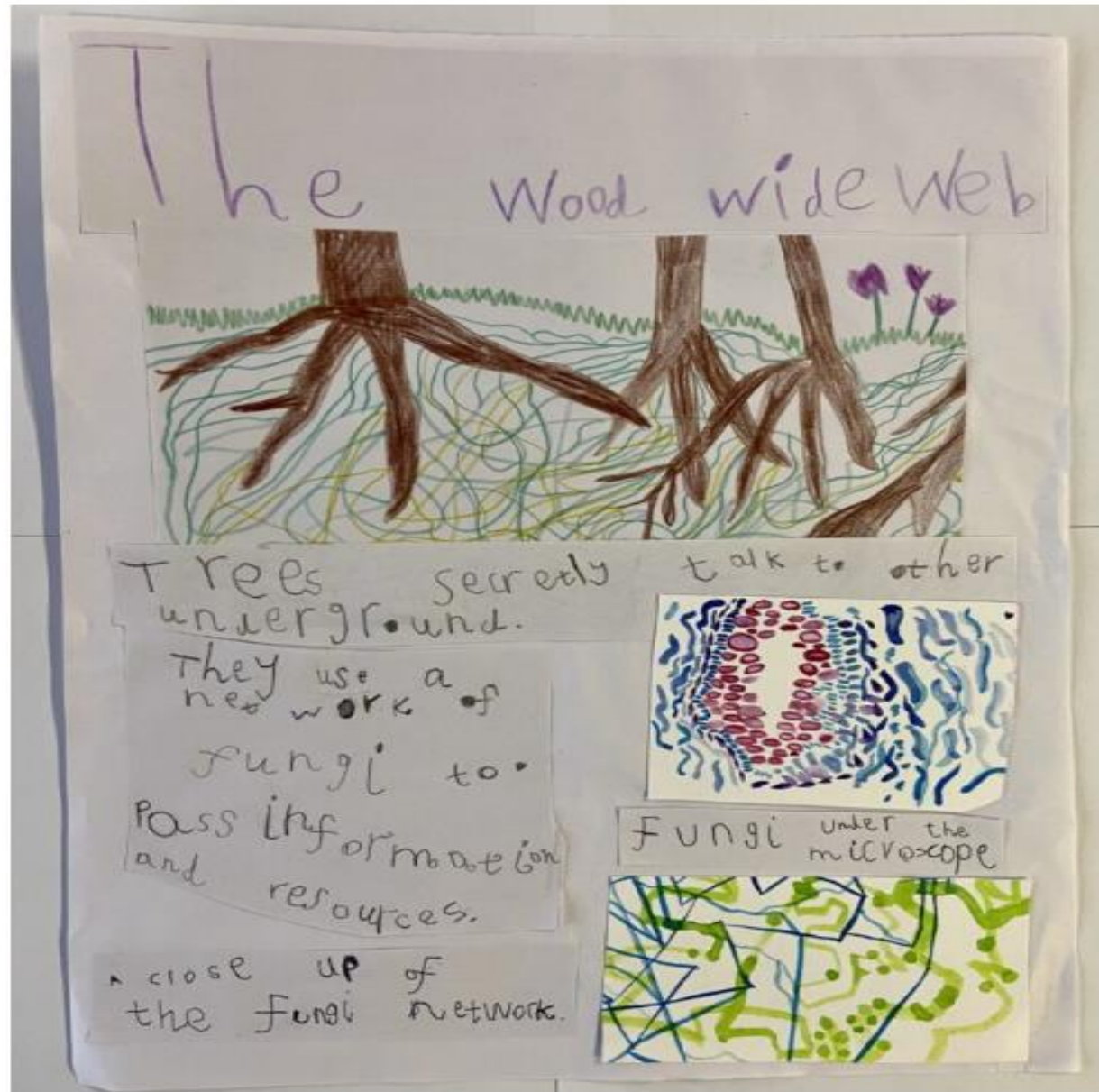
- Some orchids such as coral root orchids and bird's nest orchids steal resources from nearby trees.
- Some species of trees, like the Black Walnut, spread toxic chemicals to try and eliminate competition.

MYCELIUM:

A root-like structure of fungus consisting of a mass of branching thread-like hyphae (each branch of mycelium).

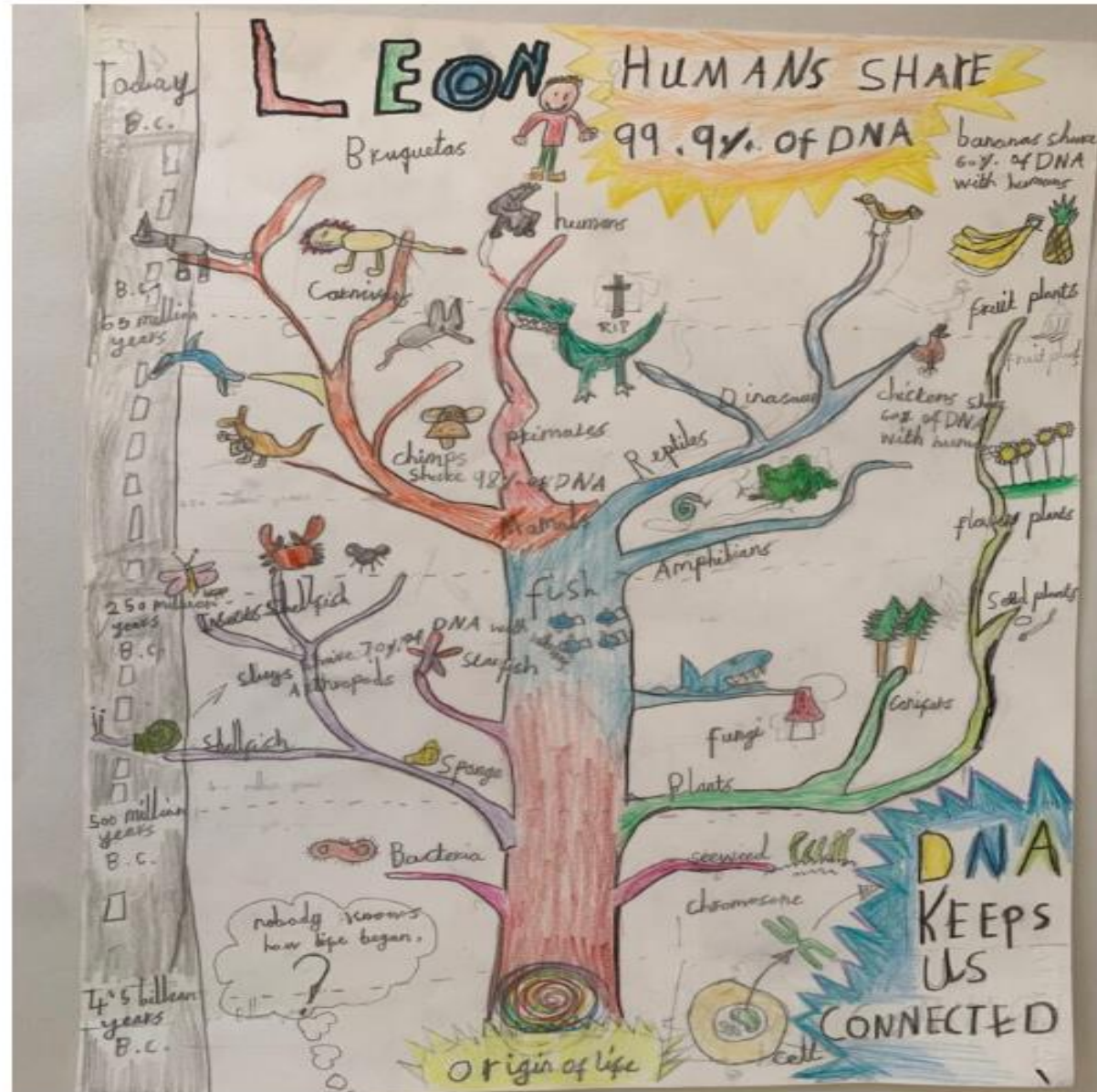
Early years winner

Nonnie – Glenfrome Primary School



Infant winner

Leon – Our Lady of Muswell Primary



Junior winner

Gagan – Park Hall Junior Academy

