

notes

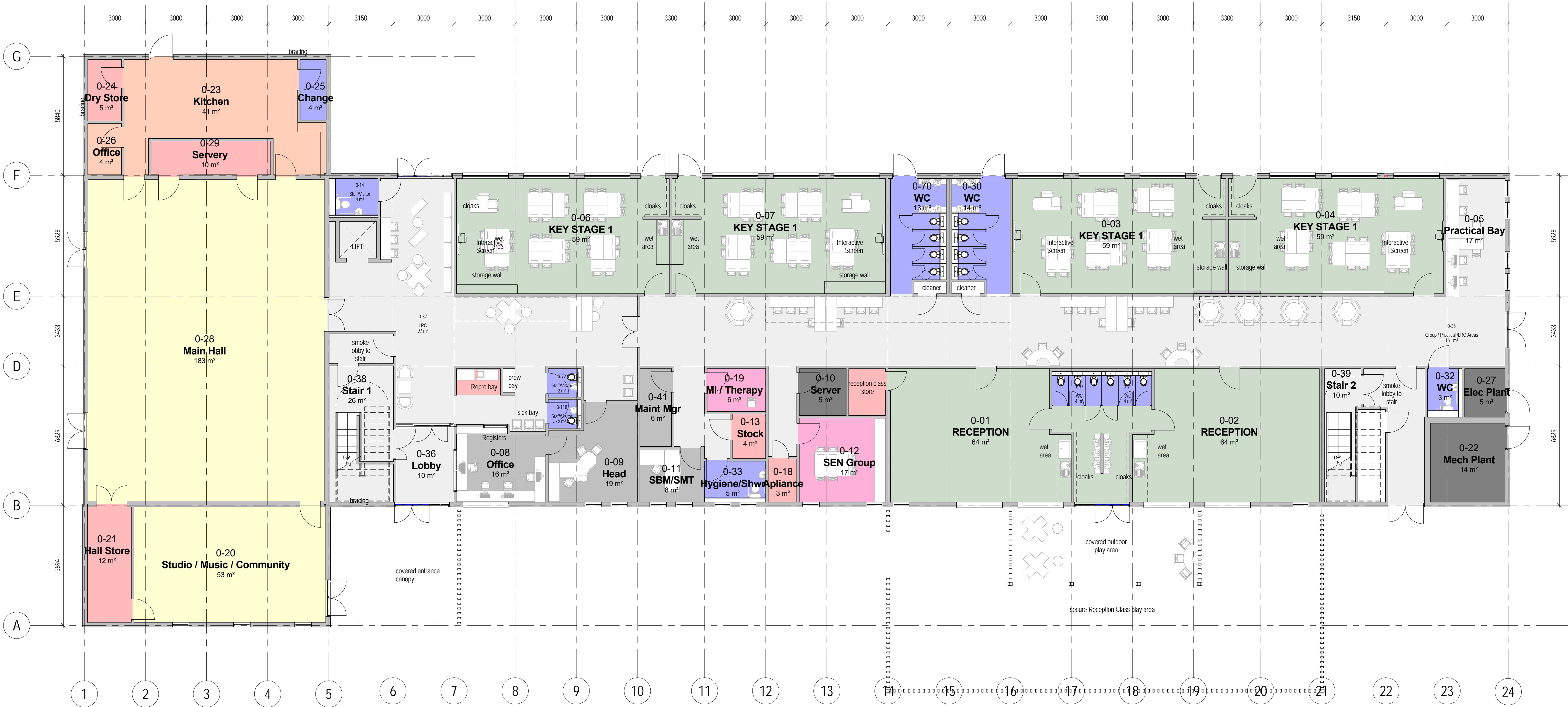
This drawing is the property of Bluesky Architects and copyright is reserved by them. This drawing is not to be copied or disclosed by or to any unauthorised persons without the prior written consent of Bluesky Architects.

Do not scale from this drawing.

All dimensions are to be checked on site prior to construction, manufacture of any components and ordering of materials and equipment.

Any discrepancies are to be reported to the architect for clarification.

All materials and workmanship to be in accordance with the current British Standards and codes of practice.



1 Ground
1 : 100

C	17.08.16	SS	Changes to WC adjacent heads office
B	04.08.16	KS	Changes to Staff / Visitor WC
A	04.08.16	IAR	Changes to Staff / Visitor WC zone

rev date drawn by comments

client
Education Funding Agency

project
10065-04 - Ashmole Primary School

drawing
Ground Floor - Plan

drawing number
10065-04 - P 001

revision
C

date
bim reference

bluesky
architects

Building 1000 Kings Reach Yew Street Stockport SK4 2HG
t 0161 4750220
f 0161 4771748
w www.blueskyinspired.co.uk